

# Model Processor

12.0.2.0

## Migration document

© 2026 INNEO Solutions GmbH

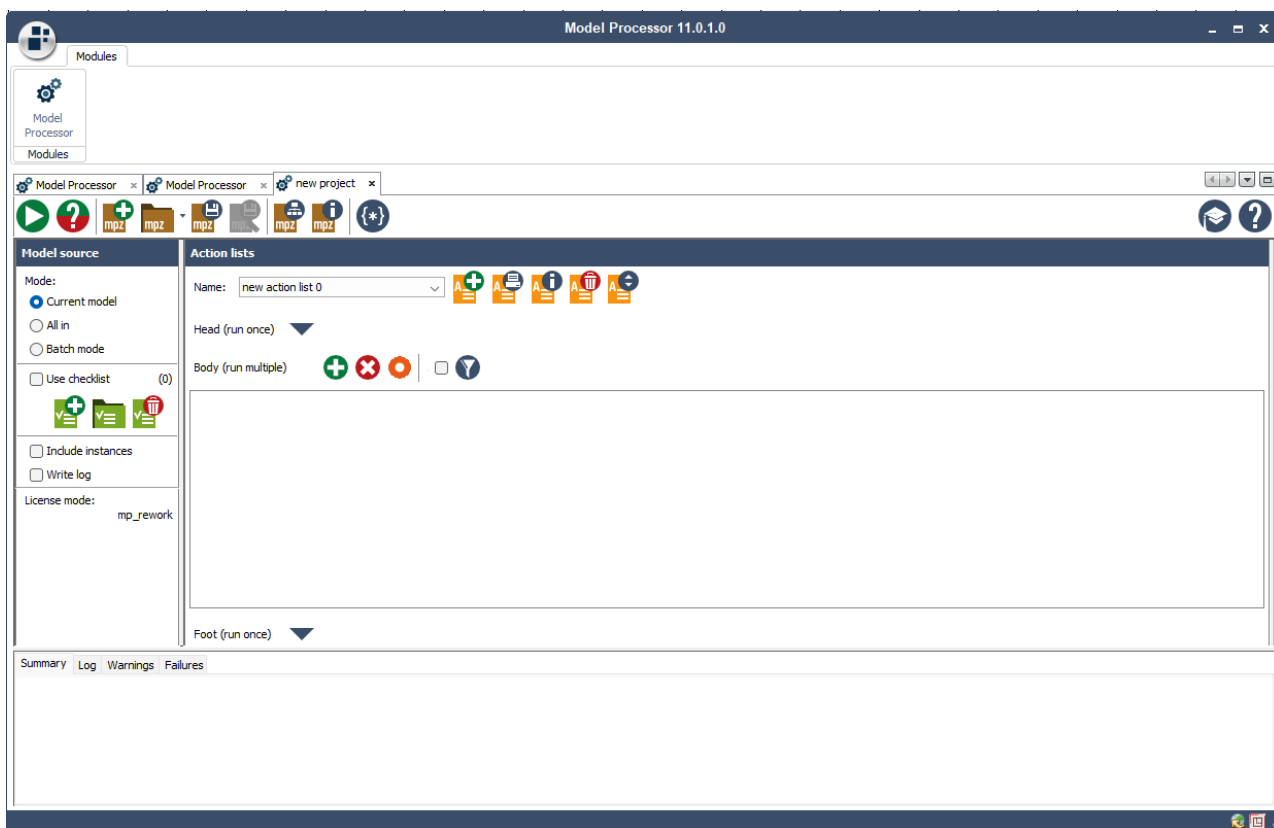


## Contents

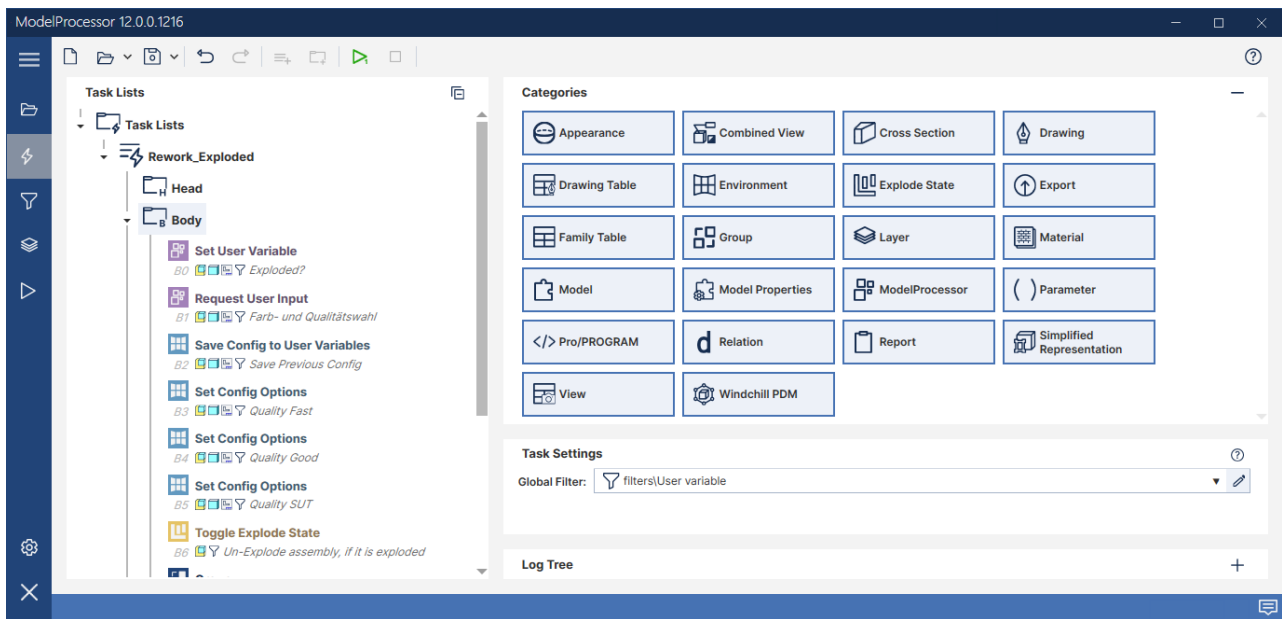
|          |                               |           |
|----------|-------------------------------|-----------|
| <b>1</b> | <b>General information</b>    | <b>2</b>  |
| <b>2</b> | <b>Project file</b>           | <b>4</b>  |
| <b>3</b> | <b>MPU Configuration file</b> | <b>5</b>  |
| <b>4</b> | <b>Comparing tasks</b>        | <b>6</b>  |
| <b>5</b> | <b>Comparing filters</b>      | <b>17</b> |

# 1 General information

GENIUS TOOLS Model Processor Classic has been redesigned and is now available with a new, more intuitive user interface and optimized functionality. This migration document will help you transition from Model Processor (Classic) to the new Model Processor by comparing the two versions and illustrating the changes.



*User interface of the GENIUS TOOLS Model Processor Classic*



User interface of the new GENIUS TOOLS Model Processor

## 2 Project file

The new Model Processor saves projects as MPX files. The MPZ files used previously – the file format for Model Processor Classic projects – can be imported into the new Model Processor or converted directly to MPX files.

A Model Processor project consists of a task list to which filters and batch rules can be added. Detailed descriptions can be found in the respective help documents.

### 3 MPU Configuration file

The file containing the configuration settings for Model Processor User is called *mpu\_main.cfg* and is located in the Conf directory. It must be adapted for the newly developed Model Processor. Please refer to the installation manual for Model Processor User.

---

**Warning:** You cannot use the MPU configuration file for the old Model Processor (Classic) for the newly developed Model Processor.

---

## 4 Comparing tasks

The following table compares the tasks available in Model Processor Classic and the tasks in the new Model Processor.

The filters are highlighted in color:

| Color | Explanation                |
|-------|----------------------------|
| blue  | Existing task is available |
| green | New task                   |
| red   | Task is not implemented.   |
| black | Task will be implemented.  |

| <i><b>Model Processor Classic</b></i> | <i><b>Model Processor (new)</b></i>                                     |
|---------------------------------------|---|
| <b>Category: Environment</b>          | <b>Category: Environment</b>  |
| Clear all windows                     | Close All Open Windows  |
| Erase undisplayed models              | Erase Undisplayed Models  |
| Group action                          | Group (Set group mode)<br>(in new category <b>Group</b> )               |
| Request user Input                    | Request User Input<br>(in new category <b>Model Processor</b> )         |
| Run JavaScript                        | Run JavaScript  |
| Run sync app function                 |   |
| Save config options                   | Save Config to User Variables   |
| Set config options                    | Set Config Options;<br>Load Config from User Variables                  |
| Set environment variable              | Set Environment Variable  |
| Set user variable                     | Set User Variable<br>(in new category <b>Model Processor</b> )          |
| Set user variable from URL            | Set User Variable From URL<br>(in new category <b>Model Processor</b> ) |
|                                       | Transform XSLT  |
| Set working directory                 | Set Working Directory   |
| Start MSDOS command                   | Start MS-DOS Command  |

| <b><i>Model Processor Classic</i></b> | <b><i>Model Processor (new)</i></b> |
|---------------------------------------|-------------------------------------|
| <b>Category: Environment</b>          | <b>Category: Environment</b>        |
| Start mapkey                          | Start Mapkey                        |
|                                       | Start PowerShell Command            |
|                                       | Start Python Script                 |
| Start trail file                      | Start Trail File                    |
| Write to Creo Log                     | Write to Creo Log                   |
| Write to file                         | Write To File                       |
|                                       | Write To Model Data                 |
| <b><i>Model Processor Classic</i></b> | <b><i>Model Processor (new)</i></b> |
| <b>Category: PTC Windchill PDM</b>    | <b>Category: Windchill PDM</b>      |
| Add file to workspace                 | Add File to Workspace               |
| Checkin model                         | Check In Model                      |
| Checkout model                        | Check Out Model                     |
| Clear workspace                       | Clear Workspace                     |
| Remove file from Workspace            | Remove File from Workspace          |
| Set server active                     | Set Server Active                   |
| <b><i>Model Processor Classic</i></b> | <b><i>Model Processor (new)</i></b> |
| <b>Category: Model</b>                | <b>Category: Model</b>              |
| Add 3D annotation                     |                                     |
| Backup action                         | Backup Model                        |
| Cancel feature insert position        | Cancel Feature Insert Position      |
| Compute mass                          | Compute Mass                        |
| Copy model                            | Copy model                          |
| Create DM dot matrix                  |                                     |
| Create QR dot matrix                  |                                     |
| Edit model dimension from file        |                                     |
| Edit PTC_COMMON_NAME                  | Edit Common Name                    |
| Embed models                          | Embed Model                         |



| <i><b>Model Processor Classic</b></i>   | <i><b>Model Processor (new)</b></i>                                    |
|---|--|
| <b>Category: Model</b>                  | <b>Category: Model</b>   |
| Insert first features                   |  |
| Load tolerance table                    | Load Tolerance Table   |
| Regenerate model                        | Regenerate model   |
| Remove feature                          | Remove feature   |
| Rename feature                          | Rename feature   |
| Rename model                            | Rename Model   |
| Replace model                           | Replace model  |
| Rescale feature positions in assemblies | Rescale component positions  |
| Save model                              | Save model   |
| Set accuracy                            | Set Accuracy<br>(in new category <b>Model Properties</b> )             |
| Set all dimension bounds                | Set All Dimension Bounds<br>(in new category <b>Model Properties</b> ) |
| Set feature insert position             | Set Feature Insert Position  |
| Set model options (dtl)                 | Set Model Options (DTL)<br>(in new category <b>Model Properties</b> )  |
| Set style                               | Set style  |
| Set tolerance                           | Set Tolerance<br>(in new category <b>Model Properties</b> )            |
| Set units                               | Set Unit System<br>(in new category <b>Model Properties</b> )          |
| Set user variable from bounding box     |  |
| Start ModelCHECK                        | Start ModelCHECK   |
| Suppress feature                        | Suppress Features  |
| <i><b>Model Processor Classic</b></i>   | <i><b>Model Processor (new)</b></i>                                    |
| <b>Category: Model - Views</b>          | <b>Category: View</b>  |
| Add views                               | Add View   |
|   | Delete View  |
| Rename view                             | Rename View  |

| <b><i>Model Processor Classic</i></b> | <b><i>Model Processor (new)</i></b> |
|---------------------------------------|-------------------------------------|
| <b>Category: Model - Views</b>        | <b>Category: View</b>               |
| Set view                              | Set View                            |
| <b><i>Model Processor Classic</i></b> | <b><i>Model Processor (new)</i></b> |
| <b>Category: Model - Relations</b>    | <b>Category: Relation</b>           |
| Add feature relations                 | Add Feature Relations               |
| Add model relations                   | Add Model Relations                 |
| Delete feature relations              | Delete Feature Relations            |
| Delete model relations                | Delete Model Relations              |
| Edit feature relations                | Edit Feature Relations              |
| Edit model relations                  | Edit Model Relations                |
| Set relation unit sensitive           | Set Relations Unit Sensitive        |
| <b><i>Model Processor Classic</i></b> | <b><i>Model Processor (new)</i></b> |
| <b>Category: Model - Export</b>       | <b>Category: Export</b>             |
|                                       | Export 3MF                          |
| Export Creo View file                 | Export Creo View                    |
| Export IGES file                      | Export IGES                         |
| Export JPG file                       | Export JPG                          |
| Export NEUTRAL file                   | Export Neutral                      |
| Export PARASOLID file                 | Export Parasolid                    |
| Export PDF / U3D file                 | Export U3D-PDF                      |
| Export SAT file                       | Export ACIS (SAT)                   |
| Export STEP file                      | Export STEP                         |
| Export STL file                       | Export STL                          |
| <b><i>Model Processor Classic</i></b> | <b><i>Model Processor (new)</i></b> |
| <b>Category: Model - Family table</b> | <b>Category: Family table</b>       |
| Delete family table instance          | Delete Family Table Instances       |
| Split up family table                 | Split up Family Table               |

| <b><i>Model Processor Classic</i></b>   | <b><i>Model Processor (new)</i></b>          |
|---|--|
| <b>Category: Model - Family table</b>   | <b>Category: Family table</b>                |
| Unlock all instances                    | Unlock all Instances                         |
| Verify family table                     | Verify Family Table                          |
| <b><i>Model Processor Classic</i></b>   | <b><i>Model Processor (new)</i></b>          |
| <b>Category: Model - Appearance</b>     | <b>Category: Appearance</b>                  |
| Set appearance                          |  |
| Set appearance from rgb                 | Clear Appearance;<br>Set Appearance From RGB |
| <b><i>Model Processor Classic</i></b>   | <b><i>Model Processor (new)</i></b>          |
| <b>Category: Model - Layer</b>          | <b>Category: Layer</b>                       |
| Add layer                               | Add Layers                                   |
| Add layer state                         | Add Layer State                              |
| Delete layer / move features            | Delete Layers                                |
| Delete layer state                      | Delete Layer State                           |
| Group layer                             | Group Layers                                 |
| Rename layer                            | Rename Layers                                |
| Set layer state                         | Set Layer State                              |
| Set layer status                        | Set Layer Status                             |
| <b><i>Model Processor Classic</i></b>   | <b><i>Model Processor (new)</i></b>          |
| <b>Category: Model - Combined State</b> | <b>Category: Combined View</b>               |
| Add combined state                      | Add Combined View                            |
| Delete combined state                   | Delete Combined View                         |
|   | Edit Combined View                           |
| Set combined state                      | Set Combined View                            |

| <b><i>Model Processor Classic</i></b>           | <b><i>Model Processor (new)</i></b> |
|---|-------------------------------------|
| <b>Category: Model - Explode State</b>          | <b>Category: Explode State</b>      |
| Add explode state                               | Add explode state                   |
| Delete explode state                            | Delete explode state                |
| Set explode state                               | Set explode state                   |
|   | Toggle Explode State                |
| <b><i>Model Processor Classic</i></b>           | <b><i>Model Processor (new)</i></b> |
| <b>Category: Model - Cross Section</b>          | <b>Category: Cross Section</b>      |
| Activate cross section                          | Set Cross Section                   |
| Add cross section                               | Add Cross Section                   |
| Delete cross section                            | Delete Cross Section                |
| Show cross section                              | Set Cross Section                   |
| Update all cross section in model               | Update Cross Sections               |
| <b><i>Model Processor Classic</i></b>           | <b><i>Model Processor (new)</i></b> |
| <b>Category: Model - Material</b>               | <b>Category: Material</b>           |
| Edit material from file                         |                                     |
| Replace material                                |                                     |
| Add material                                    | Add Material                        |
| Delete material                                 | Delete material                     |
| Edit current material parameter                 |                                     |
| Add material parameter                          |                                     |
| <b><i>Model Processor Classic</i></b>           | <b><i>Model Processor (new)</i></b> |
| <b>Category: Model - Parameter</b>              | <b>Category: Parameter</b>          |
| Add alternative model parameter                 |                                     |
| Add associative parameter to flexible dimension |                                     |
| Add feature parameter                           | Add Feature Parameter               |
| Add model parameter                             | Add Parameter                       |
| Change all designation flags                    | Change All Designation Flags        |

| <b><i>Model Processor Classic</i></b>              | <b><i>Model Processor (new)</i></b>        |
|--|--|
| <b>Category: Model - Parameter</b>                 | <b>Category: Parameter</b>                 |
| Delete feature parameter                           | Delete Feature Parameter                   |
| Delete model parameter                             | Delete Parameter                           |
| Edit drawing parameter from model                  |  |
|  | Edit Feature Parameter                     |
| Edit model parameter                               | Edit Parameter                             |
| Edit model parameter from file                     |  |
| Edit parameter from dictionary                     | Edit Parameter from Dictionary             |
| Edit parameter from symbol text                    |  |
| Edit parameter from table cell                     |  |
| Fill component parameters by reference             |  |
|  | Rename Feature Parameter                   |
|  | Set Access State of Parameter              |
| <b><i>Model Processor Classic</i></b>              | <b><i>Model Processor (new)</i></b>        |
| <b>Category: Model - Pro/PROGRAM</b>               | <b>Category: Pro/PROGRAM</b>               |
| Delete model Pro/PROGRAM input lines               | Delete model Pro/PROGRAM input lines       |
| Delete model Pro/PROGRAM lines                     | Delete model Pro/PROGRAM lines             |
| <b><i>Model Processor Classic</i></b>              | <b><i>Model Processor (new)</i></b>        |
| <b>Category: Model - Simplified representation</b> | <b>Category: Simplified Representation</b> |
| Create simplified representation                   | Create Simplified Representation           |
| Delete simplified representation                   | Delete Simplified Representation           |
| Set simplified representation                      | Set Simplified Representation              |
| Edit simplified representation                     | Edit Simplified Representation             |
| Edit simplified representation                     | Rename Simplified Representation           |

| <b><i>Model Processor Classic</i></b> | <b><i>Model Processor (new)</i></b> |
|---------------------------------------|-------------------------------------|
| <b>Category: Model - Drawing</b>      | <b>Category: Drawing</b>            |
|                                       | Edit Drawing Note From Dictionary   |
| Edit model notes from file            |                                     |
| Remove all annotations                | Remove All Annotations              |
| Remove unused drawing models          | Remove Unused Drawing Models        |
| Replace format                        | Replace Drawing Format              |
| Replace view model display            |                                     |
| Set current drawing model             | Set Current Drawing Models          |
| Set current sheet scale               | Set Current Sheet Scale             |
|                                       | Show Drawing Format                 |
| Show unbend features on views         | Show Unbend Features on Views       |
| <b><i>Model Processor Classic</i></b> | <b><i>Model Processor (new)</i></b> |
| <b>Category: Drawing - Export</b>     | <b>Category: Export</b>             |
| 2D PDF Datei exportieren              | Export 2D PDF                       |
| DWG Datei exportieren                 | Export DWG                          |
| DXF Datei exportieren                 | Export DXF                          |
| TIFF Datei exportieren                | Export TIFF                         |
| <b><i>Model Processor Classic</i></b> | <b><i>Model Processor (new)</i></b> |
| <b>Category: Drawing - Note</b>       |                                     |
| Add note                              |                                     |
| Delete note                           |                                     |
| Move note                             |                                     |
| <b><i>Model Processor Classic</i></b> | <b><i>Model Processor (new)</i></b> |
| <b>Category: Drawing - Symbol</b>     |                                     |
| Add symbol                            |                                     |
| Change symbol group                   |                                     |
| Create Barcode (PDF417)               |                                     |

| <b><i>Model Processor Classic</i></b> | <b><i>Model Processor (new)</i></b>     |
|---------------------------------------|---|
| <b>Category: Drawing - Symbol</b>     |   |
| Create DM code symbol                 |   |
| Create QR code symbol                 |   |
| Delete symbol                         |   |
| Move symbol                           |   |
| Remove symbol paths                   |   |
| Update symbol definitions             |   |
| <b><i>Model Processor Classic</i></b> | <b><i>Model Processor (new)</i></b>     |
| <b>Category: Drawing - Table</b>      | <b>Category: Drawing Table</b>          |
| Add table                             | Add Table                               |
| Delete table                          | Delete Table                            |
| Move table                            | Move Table                              |
| <b><i>Model Processor Classic</i></b> | <b><i>Model Processor (new)</i></b>     |
| <b>Category: Report</b>               | <b>Category: Report</b>                 |
|                                       | Report Combined Views                   |
|                                       | Report Definition                       |
| Report dependencies                   | Report Dependencies                     |
| Report drawing data                   | Report Drawing Data<br>Report File Data |
| Report drawing table cell             |   |
| Report family table                   | Report Family Table                     |
| Report Feature Parameters             | Report Features                         |
| Report feature positions              |   |
| Report geometry properties            |   |
| Report layer                          | Report Layers                           |
| Report materials                      | Report Materials                        |
| Report model data                     | Report Model Data<br>Report File Data   |
| Report parameters                     | Report Parameter Values                 |

| <b>Model Processor Classic</b> | <b>Model Processor (new)</b>                                  |
|--------------------------------|---|
| <b>Category: Report</b>        | <b>Category: Report</b>                                       |
| Report Pro / Program           | Report Pro/PROGRAM  |
| Report relations               | Report Relations  |
| Report universal               | Report Universal  |
| Write informative PDF          |   |
| Write list all report          | List Report Definition  |
|                                | Write Report  |
| <b>Model Processor Classic</b> | <b>Model Processor (new)</b>                                  |
|                                | <b>Category: Group</b>  |
|                                | Group (Set group mode)<br>(from category <b>Environment</b> ) |
| <b>Model Processor Classic</b> | <b>Model Processor (new)</b>                                  |
|                                | <b>Category: Modell Properties</b>                            |
|                                | Set All Dimension Bounds<br>(from category <b>Model</b> )     |
|                                | Set Unit System<br>(from category <b>Model</b> )              |
|                                | Set Accuracy<br>(from category <b>Model</b> )                 |
|                                | Set Model Options (DTL)<br>(from category <b>Model</b> )      |
|                                | Set Tolerance<br>(from category <b>Model</b> )                |
| <b>Model Processor Classic</b> | <b>Model Processor (new)</b>                                  |
|                                | <b>Category: ModellProcessor</b>                              |
|                                | Request User Input<br>(from category <b>Environment</b> )     |
|                                | Request Variable from File Chooser                            |
|                                | Reset Error State   |



**Model Processor Classic****Model Processor (new)****Category: ModellProcessor**

Set Global User Variable

Set User Variable

(from category **Environment**)

Set User Variable From Dictionary

Set User Variable From File

Set User Variable From Model Data

Set User Variable From URL

(from category **Environment**)

Write to ModelProcessor Log

## 5 Comparing filters

Filters can be applied to all tasks to determine when an task is executed. Model Processor Classic used a filter list. The new Model Processor has a filter tree where you can describe filters in more detail. Filters are executed outside of an task, i.e., tasks and filters are defined independently of each other.

The following table compares the filters available in Model Processor Classic and the filters in the new Model Processor.

The filters are highlighted in color:

| Color | Explanation                       |
|-------|-----------------------------------|
| blue  | Existing task is available.       |
| green | New task                          |
| red   | Task will not be implemented.     |
| black | Task is still being implemented.. |

| <i>Model Processor Classic</i> | <i>Model Processor (new)</i>                             |
|--------------------------------|--|
| <b>Category: Assembly</b>      | <b>Category: Explode State</b> < This category is new. > |

Assembly is Exploded

|                      |   |
|----------------------|---|
| Explode state exists | Explode State Exists  |
| Style state exists   | Style State Exists<br>(in new category <b>Style State</b> ) |

| <i>Model Processor Classic</i> | <i>Model Processor (new)</i> |
|--------------------------------|------------------------------|
| <b>Category: Drawing</b>       | <b>Category: Drawing</b>     |

|                        |                                     |
|------------------------|-------------------------------------|
| current model          | Current Drawing Model               |
| Dimension text         | Dimension Text Exists in Drawing    |
| Format name            | Format Name                         |
| Formats on sheets      | Formats on Sheets                   |
| Is multi model drawing | Is Multi Model Drawing              |
|                        | Parameter value of the active model |
| Sheet size             | Current Sheet Size                  |
| Symbol in drawing      | Symbol Exists in Drawing            |

| <i><b>Model Processor Classic</b></i> | <i><b>Model Processor (new)</b></i>                              |
|---------------------------------------|--|
| <b>Category: Drawing</b>              | <b>Category: Drawing</b>   |
| Symbol on drawing                     | Symbol Exists on Drawing   |
| Table on drawing                      | Table on Drawing<br>(in category <b>Model</b> )                  |
| <i><b>Model Processor Classic</b></i> | <i><b>Model Processor (new)</b></i>                              |
| <b>Category: Environment</b>          | <b>Category: Environment</b>                                     |
|                                       | An Error Occured<br>(in new category <b>Utility</b> )            |
| Creo version                          | Creo Version   |
|                                       | DTL Option   |
| Environment variable                  | Environment Variable   |
|                                       | Expression<br>(in new category <b>Utility</b> )                  |
| File exists                           | File Exists  |
|                                       | Linked Filter<br>(in new category <b>Utility</b> )               |
| Model exists                          | Model Exists   |
|                                       | Expression<br>(in new category <b>Utility</b> )                  |
| User parameter                        | User Variable<br>(in new category <b>Utility</b> )               |
| <i><b>Model Processor Classic</b></i> | <i><b>Model Processor (new)</b></i>                              |
| <b>Category: Model</b>                | <b>Category: Model</b>   |
| Dimension tolerance                   | Dimension Tolerance  |
| Double defined Parameters             | Double defined Parameters<br>(in new category <b>Parameter</b> ) |
| Dtl Option                            | DTL Option<br>(in new category <b>Environment</b> )              |
|                                       | Feature exists<br>(from old category <b>Solid</b> )              |

| <i><b>Model Processor Classic</b></i> | <i><b>Model Processor (new)</b></i>  |
|---------------------------------------|--|
| <b>Category: Model</b>                | <b>Category: Model</b>   |
| File name                             | File Name  |
|                                       | Geometric Check Exists<br>(from old category <b>Solid</b> )                            |
|                                       | Is Insert Mode Active<br>(from old category <b>Solid</b> )                             |
| Is modified                           | Model is modified  |
| Is regeneratable                      | Model is Regenerable   |
| Layer                                 | Layer Exists<br>(in new category <b>Layer</b> )  |
|                                       | Model has Circular References<br>(from old category <b>Solid</b> )                     |
| Model sub type                        | Model Subtype  |
| Parameter                             | Parameter Value<br>(in new category <b>Parameter</b> )                                 |
| Parameter type                        | Parameter Type<br>(in new category <b>Parameter</b> )                                  |
|                                       | Part is Skeleton Model<br>(from old category <b>Part</b> )                             |
| Path                                  | File Path  |
| PDM object                            | Model is PDM Object  |
| PDM object (deprecadet)               |  |
|                                       | Table on Drawing   |
|                                       | Unit System<br>(from old category <b>Solid</b> )                                       |
| <i><b>Model Processor Classic</b></i> | <i><b>Model Processor (new)</b></i>  |
| <b>Category: Part</b>                 | < This category has not been transferred. Filters are available in other categories. > |
| Current material name                 | Current Material Name<br>(in new category <b>Material</b> )                            |
| Is skeleton                           | Part is Skeleton Model<br>(in category <b>Model</b> )                                  |

| <i><b>Model Processor Classic</b></i>   | <i><b>Model Processor (new)</b></i>  |
|---|--|
| <b>Category: Part</b>   | < This category has not been transferred. Filters are available in other categories. > |
| Material parameter  | Material Parameter Value<br>(in new category <b>Parameter</b> )                        |
| <i><b>Model Processor Classic</b></i>   | <i><b>Model Processor (new)</b></i>  |
| <b>Category: Solid</b>  | < This category has not been transferred. Filters are available in other categories. > |
| Accuracy  | Solid Accuracy<br>(in new category <b>Model Properties</b> )                           |
| Combined State  | Combined View Exists<br>(in new category <b>Combined View</b> )                        |
| Contains circular dependencies  | Model has Circular References<br>(in category <b>Model</b> )                           |
| Cross section exists  | Cross Section Exists<br>(in category <b>Cross Section</b> )                            |
|   | Current View Name<br>(in new category <b>View</b> )                                    |
| Feature exists, Feature from type, Feature is flexible, Feature is suppressed | Feature Exists<br>(in category <b>Model</b> )  |
| Geometry check exists   | Geometric Check Exists<br>(in category <b>Model</b> )                                  |
| Instance with name  | Instance Exists<br>(in new category <b>Family Table</b> )                              |
| Is insert mode active   | Is Insert Mode Active<br>(in category <b>Model</b> )                                   |
| Is instance   | Solid is Instance<br>(in new category <b>Family Table</b> )                            |
| Ist generic   | Solid is Generic<br>(in new category <b>Family Table</b> )                             |
| Layer state exists  | Layer State Exists<br>(in new category <b>Layer</b> )                                  |
| Relation  | Relation Exists<br>(in new category <b>Relation</b> )                                  |

| <b>Model Processor Classic</b>   | <b>Model Processor (new)</b>   |
|----------------------------------|--|
| <b>Category: Solid</b>           | < This category has not been transferred. Filters are available in other categories. > |
| Simplified representation exists | Simplified Representation Exists<br>(in category <b>Simplified Representation</b> )    |
| Tolerance                        | Solid has Tolerance<br>(in new category <b>Model Properties</b> )                      |
| Ungenerated instance             | Ungenerated Instance Exists<br>(in new category <b>Family Table</b> )                  |
| Unit system                      | Unit System<br>(in category <b>Model</b> )   |
| View exists                      | View Exists<br>(in new category <b>View</b> )  |
| <b>Model Processor Classic</b>   | <b>Model Processor (new)</b>   |
|                                  | <b>Category: Combined View</b> < This category is new. >                               |
|                                  | Combined View Exists   |
| <b>Model Processor Classic</b>   | <b>Model Processor (new)</b>   |
|                                  | <b>Category: Cross Section</b> < This category is new. >                               |
|                                  | Cross Section Exists<br>(from old category <b>Solid</b> )                              |
| <b>Model Processor Classic</b>   | <b>Model Processor (new)</b>   |
|                                  | <b>Category: Family Table</b> < This category is new. >                                |
|                                  | Instance Exists<br>(from old category <b>Solid</b> )                                   |
|                                  | Ungenerated Instance Exists<br>(from old category <b>Solid</b> )                       |
|                                  | Solid is Generic<br>(from old category <b>Solid</b> )                                  |
|                                  | Solid is Instance<br>(from old category <b>Solid</b> )                                 |

**Model Processor Classic****Model Processor (new)****Category: Group** < This category is new. >

"And" Filter Group

"Or" Filter Group

**Model Processor Classic****Model Processor (new)****Category: Layer** < This category is new. >

Layer Exists

Layer has Items

Layer has Status

Layer State Exists

(from old category **Solid**)**Model Processor Classic****Model Processor (new)****Category: Material** < This category is new. >

Current Material Name

(from old category **Part**)**Model Processor Classic****Model Processor (new)****Category: Model Properties** < This category is new. >

Solid has Tolerance

(from old category **Solid**)

Solid Accuracy

(from old category **Solid**)**Model Processor Classic****Model Processor (new)****Category: Parameter** < This category is new. >

Active Model Parameter Value

Double Defined Parameters

Material Parameter Value

(from old category **Part**)

Parameter Type

Parameter Value

**Model Processor Classic****Model Processor (new)****Category: Relation** < This category is new. >

Relation Exists

(from old category **Solid**)**Model Processor Classic****Model Processor (new)****Category: Simplified Representation** < This category is new. >

Simplified Representation Exists

(from old category **Solid**)**Model Processor Classic****Model Processor (new)****Category: Style State** < This category is new. >

Style State Exists

(from old category **Assembly**)**Model Processor Classic****Model Processor (new)****Category: Utility** < This category is new. >

An Error Occured

Expression

Linked Filter

User Variable

(from category **Environment**)**Model Processor Classic****Model Processor (new)****Category: View** < This category is new. >

Current View Name

View Exists

(from old category **Solid**)

## Feature Filter

Feature filters are filters that define the features (construction elements) to be revised.



**Category: Feature Filter - General**

|                       |                        |                                |
|-----------------------|------------------------|--------------------------------|
| Feature ID            | Feature is Type        | Smallest Dimension             |
| Feature is Flexible   | Feature is Ungenerated | Smallest Dimension in Interval |
| Feature is Inactive   | Feature Name           |                                |
| Feature is Suppressed | Feature Number         |                                |

**Category: Feature Filter - Groups**

"And" Filter Group

"Or" Filter Group

**Category: Feature Filter - Holes**

Thread has Tolerance Class

**Category: Feature Filter - Parameter**

Feature Parameter